



Electronic Systems Development

New !

DTS3

GPS Data Telemetry System



Features:

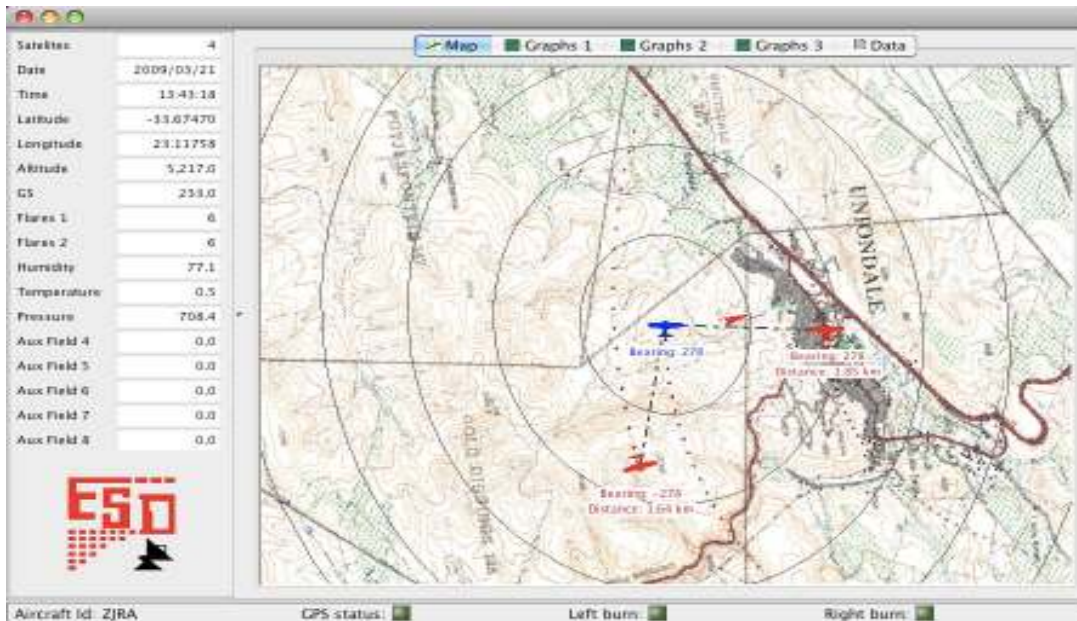
- TITAN compatible.
- Rugged aluminium enclosure.
Light weight: 1.5 Kg / 3.3 lbs, Length = 21cm , Width = 12.5cm , Height = 8.5cm .
- Low power: +- 1A @ 24V.
- 50 Channel GPS with UBLOX LEA-5 GPS chip.
- 5 Watt UHF or VHF Radio Modem at 9600 bps.
- Operates from 13 to 30V with Internal switching power supply for direct connection to aircraft power.
- Several Counter and Parallel I/O channels for connection to Flare firing system.
- 8 channel 16 bit Analog to Digital inputs for connecting to sensors.
- NMEA GPS data string output on RS232 port.
- PDS (Packet Data String) output on RS232 port for connection to Laptop or Tablet PC.
- Auxiliary RS232 serial port for connecting to other data systems such as DMT – PADS.
- Data storage on USB Pen Drive.
- Data is downward compatible with DTS2.
- *Optional **DtsView-A** Java software add-on for aircraft and base station systems.

27 Dew Berry Rd, Bel Aire, Somerset West, 7130 Cape Town, South Africa
Tel: +27 21 8554432 Cell: +27 836320286

Email: esd2k@mweb.co.za Website: www.esd-web.com

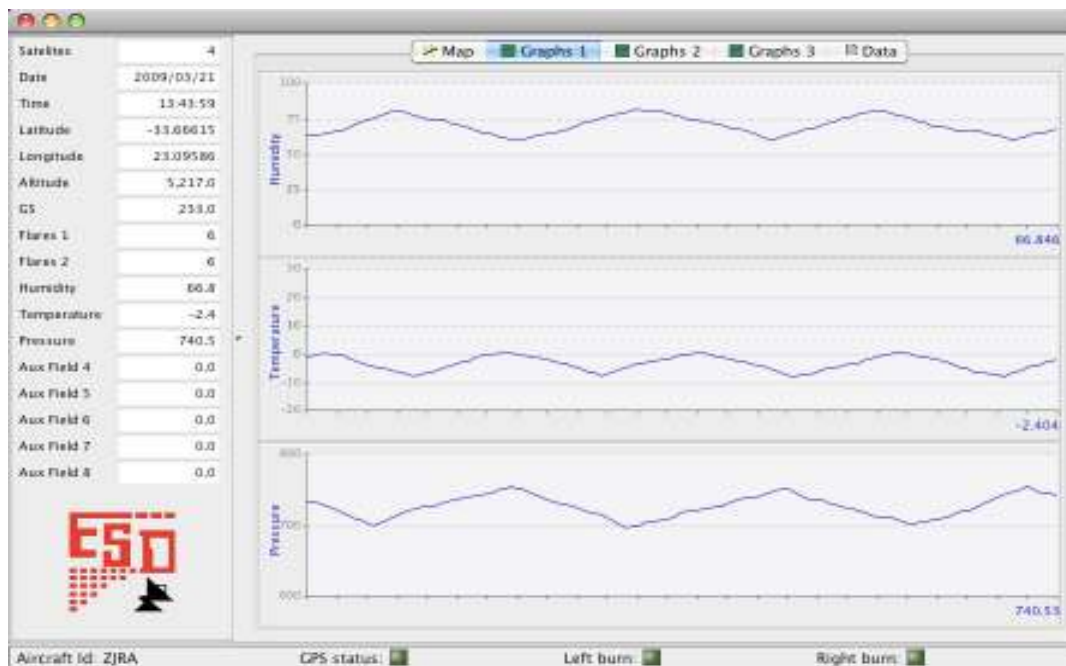
DtsView-A Java software.

DtsView-A is an add-on option for use with DTS3 Airborne system.



Aircraft position can be shown on a moving map. Other aircraft equipped with DTS3 can be shown on the same map with range and bearing to each other.

The Java based software runs on Linux or Windows machines such as a Laptop or Tablet PC for in cockpit display.



Data from Analog channels can be shown in graphic form.
Raw text data can also be displayed for debug purposes.

Email: esd2k@mweb.co.za **Website:** www.esd-web.com



Electronic Systems Development

DTS Base Station

Features:

- TITAN compatible.
- Can be used with TITAN and optional DtsView-B Base Station Software.
- Low power consumption.
- Operates from 12VDC.
- Mounts directly on pole/mast.
- Weather proof container.
- Integrated 2.2 dBi antenna eliminates cable losses.
- RS232 or Ethernet connection to TITAN.
- UHF or VHF versions available.
- Data is checked before sending to TITAN.
- * Data encryption option available.

DtsView-B Base Station Software Features

- Scanned map display.
- Text and graph display of data from selected aircraft.
- Multiple aircraft display.



Email: esd2k@mweb.co.za Website: www.esd-web.com